

Imagery Date: Apr 21, 2007

50°49'43.14" N 0°57'02.99" W elev. 0m

©2011 Infolerra Ltd & Bluesky

©2010 Google

Eye alt: 3.48 km

2011 Course Card

Mark Riddington

- Echo
- Kitts Folly
- Club
- EMS
- Little Deep
- Church
- Fowley
- Walsh
- Wickor
- Swear Deep
- Northrey
- Shepherd
- Tye
- Pusinelli
- Marker
- ESSC ODM
- ESC ODM

Imagery Date: Apr 21, 2007

ESSC Racing Marks

50°49'43.14" N 0°57'02.99" W elev 0m

© 2011 Infolerra Ltd & Bluesky

Eye alt: 3.48 km

©2010 Google

- Church
- Walsh
- NEH
- Northney
- Tye
- Marker
- Kitts Folly
- ESSC ODM
- ESC ODM
- Echo
- Ems
- Little Deep
- Fowley
- Wickor
- Shepherd
- Pusinelli





Objectives of the 2011 Course Card:

1. Each course to have a broadly equal split (in distance) of beating, reaching and running
2. To have courses that cover all wind directions, with more courses for the predominant winds directions
3. For predominant wind directions, a number of courses with differing distances
4. To maintain the 2006 average course distance of approx 5 miles



Course A

Imagery Date: Apr 21, 2007

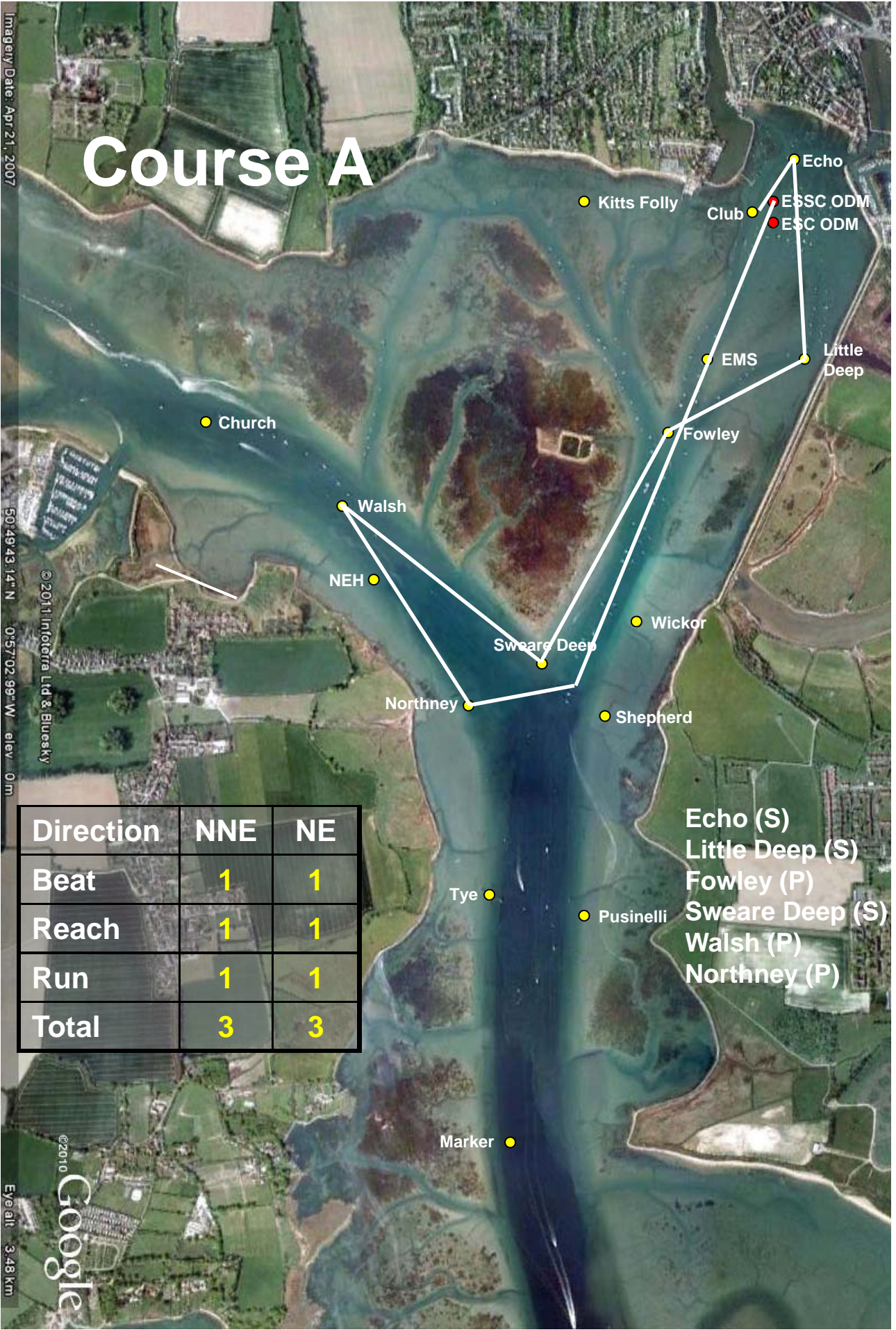
50°49'43.14" N 0°57'02.99" W elev. 0m

© 2011 Infoterra Ltd & Bluesky

Direction	NNE	NE
Beat	1	1
Reach	1	1
Run	1	1
Total	3	3

- Echo (S)
- Little Deep (S)
- Fowley (P)
- Sweara Deep (S)
- Walsh (P)
- Northney (P)

© 2010 Google
Eye alt 3.48 km



Course B

Imagery Date: Apr 21, 2007

50°49'43.14" N 0°57'02.99" W elev. 0m

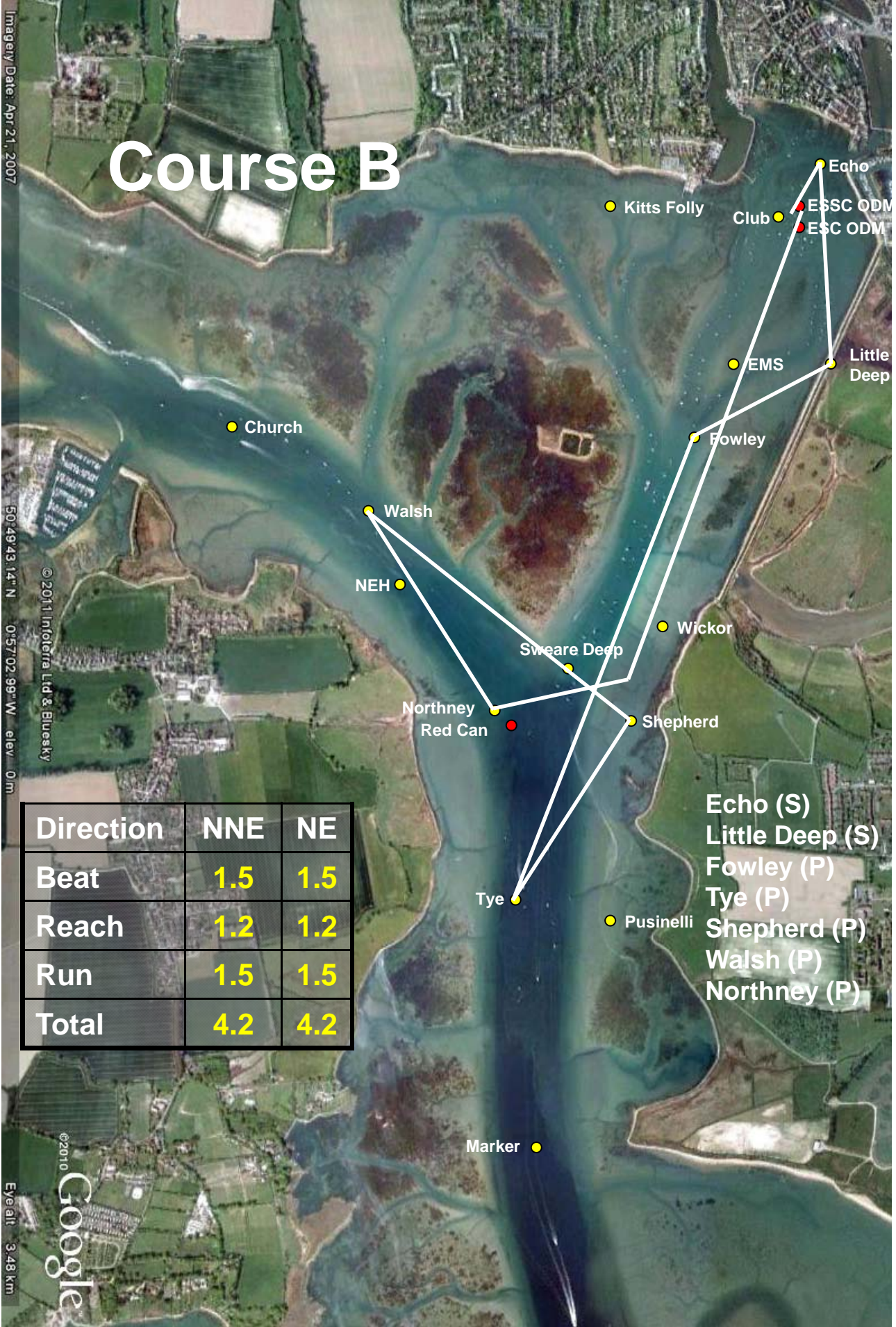
© 2011 Infoterra Ltd & Bluesky

Direction	NNE	NE
Beat	1.5	1.5
Reach	1.2	1.2
Run	1.5	1.5
Total	4.2	4.2

- Echo (S)
- Little Deep (S)
- Fowley (P)
- Tye (P)
- Shepherd (P)
- Walsh (P)
- Northney (P)

Eye alt. 3.48 km

© 2010 Google



Course C

Imagery Date: Apr 21, 2007

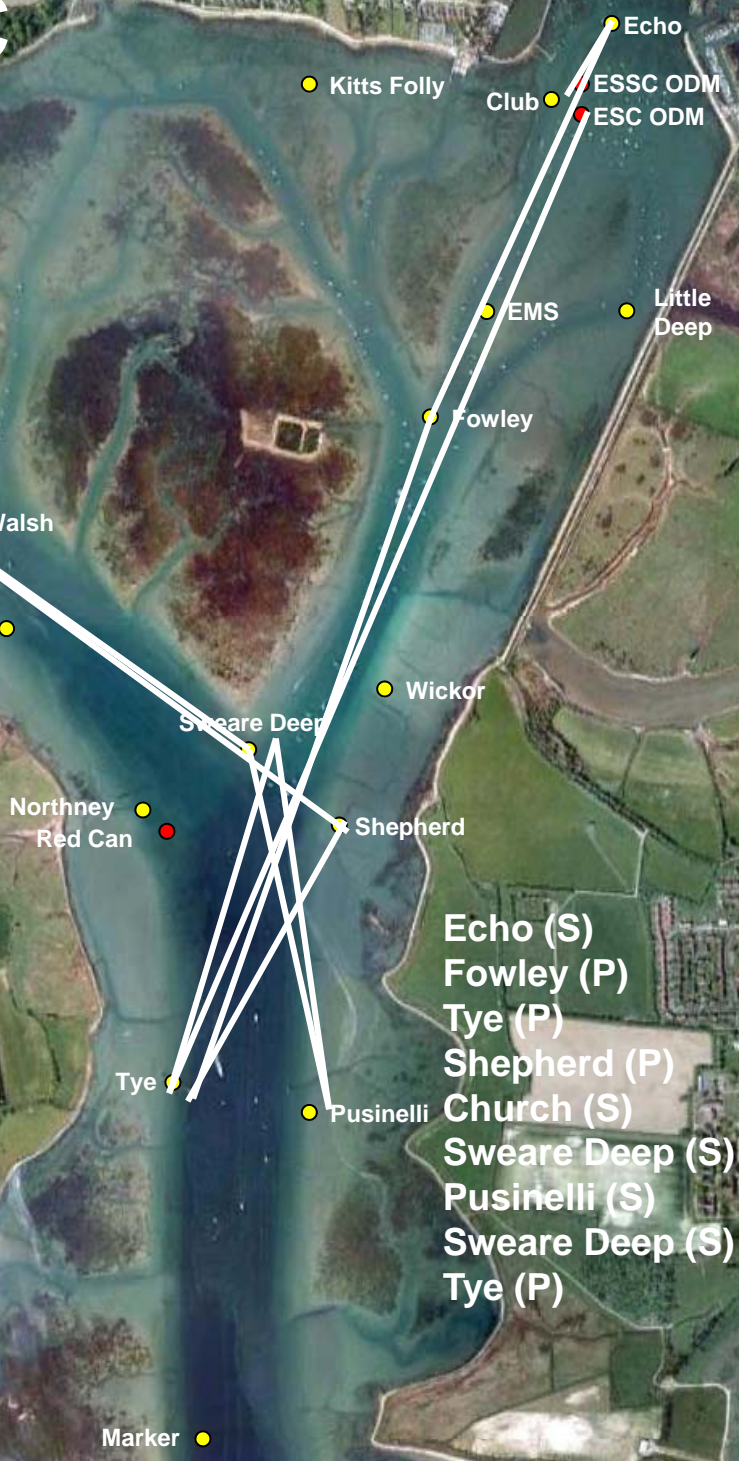
50°49'43.14" N 0°57'02.99" W elev. 0m

© 2011 Infoterra Ltd & Bluesky

© 2010 Google

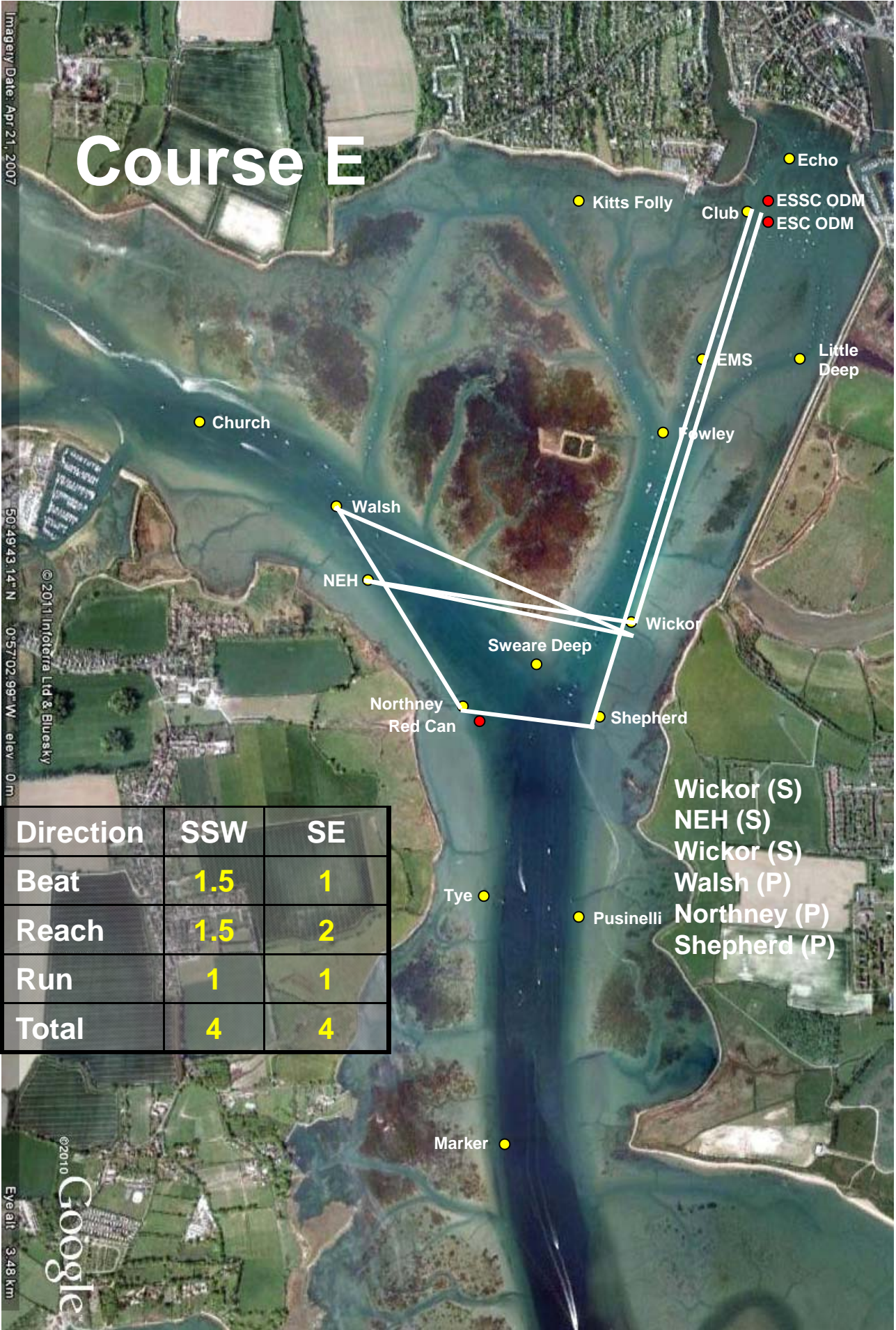
Eye alt. 3.48km

Direction	NNE	NE
Beat	2	2
Reach	2	2
Run	2	2
Total	6	6



- Echo (S)
- Fowley (P)
- Tye (P)
- Shepherd (P)
- Church (S)
- Swear Deep (S)
- Pusinelli (S)
- Swear Deep (S)
- Tye (P)

Course E



Direction	SSW	SE
Beat	1.5	1
Reach	1.5	2
Run	1	1
Total	4	4

- Wickor (S)
- NEH (S)
- Wickor (S)
- Walsh (P)
- Northney (P)
- Shepherd (P)

Imagery Date: Apr 21, 2007
 50°49'43.14" N 0°57'02.99" W elev: 0m
 © 2011 Infoterra Ltd & Bluesky
 © 2010 Google
 Eye alt: 3.48 km

Course F

Imagery Date: Apr 21, 2007

50°49'43.14" N 0°57'02.99" W elev: 0m

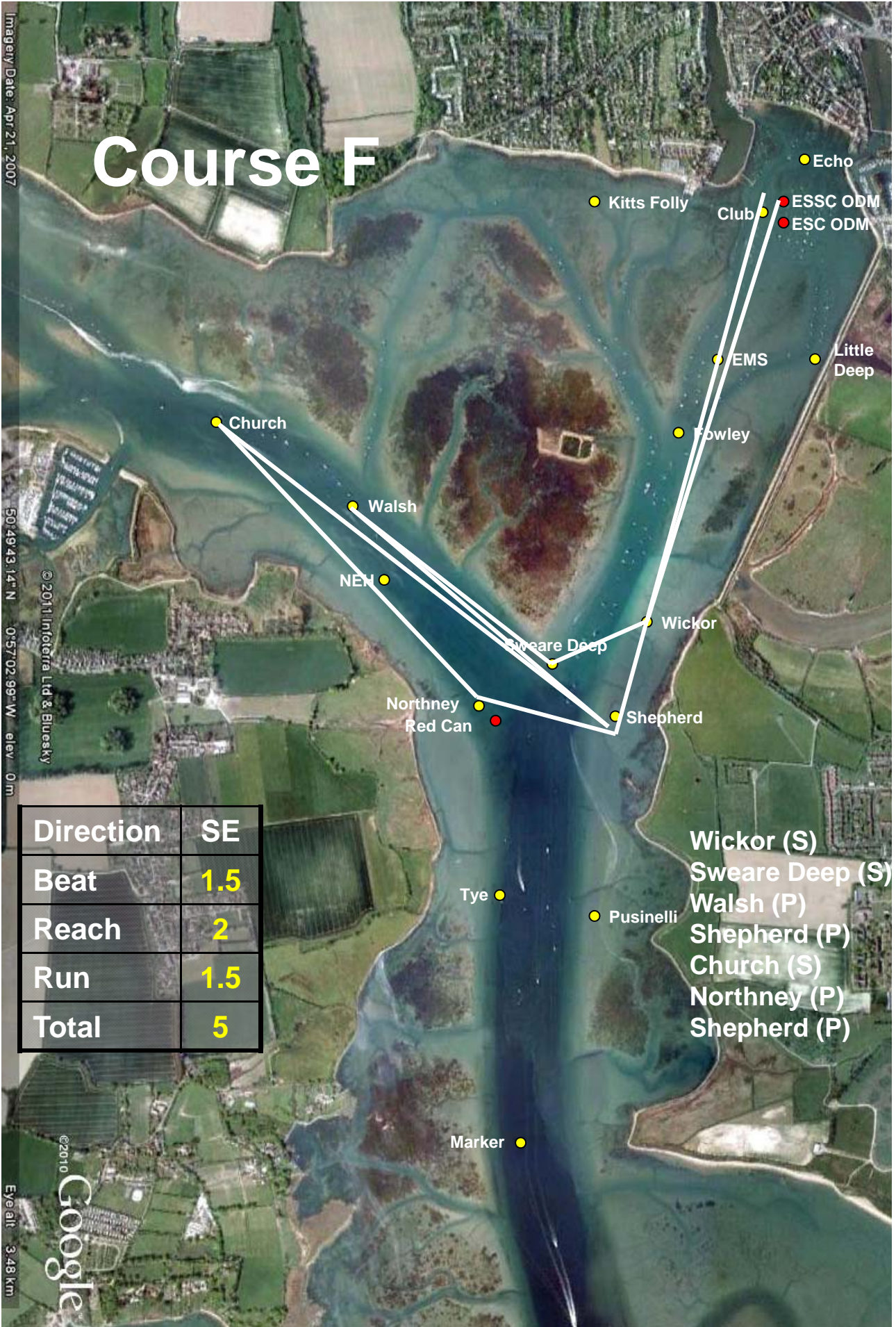
©2011 Infoterra Ltd & Bluesky

Direction	SE
Beat	1.5
Reach	2
Run	1.5
Total	5

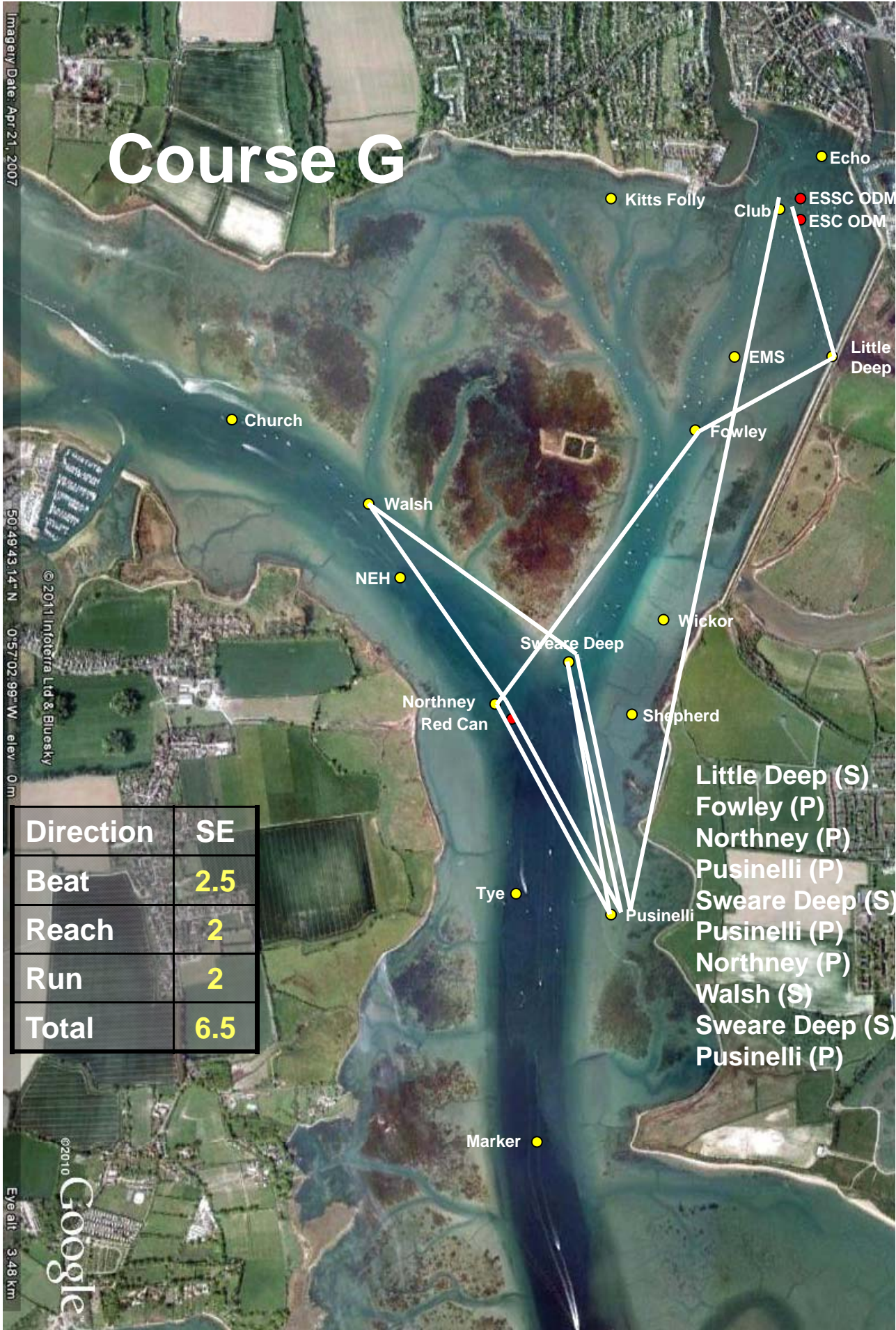
- Wickor (S)
- Sweare Deep (S)
- Walsh (P)
- Shepherd (P)
- Church (S)
- Northney (P)
- Shepherd (P)

Eye alt: 3.48 km

©2010 Google



Course G



Direction	SE
Beat	2.5
Reach	2
Run	2
Total	6.5

- Little Deep (S)
- Fowley (P)
- Northney (P)
- Pusinelli (P)
- Swear Deep (S)
- Pusinelli (P)
- Northney (P)
- Walsh (S)
- Swear Deep (S)
- Pusinelli (P)

Imagery Date: Apr 21, 2007
 50°49'43.14" N 0°57'02.99" W elev. 0m
 ©2011 Infoterra Ltd & Bluesky
 ©2010 Google
 Eye alt: 3.48 km

Course H

Imagery Date: Apr 21, 2007

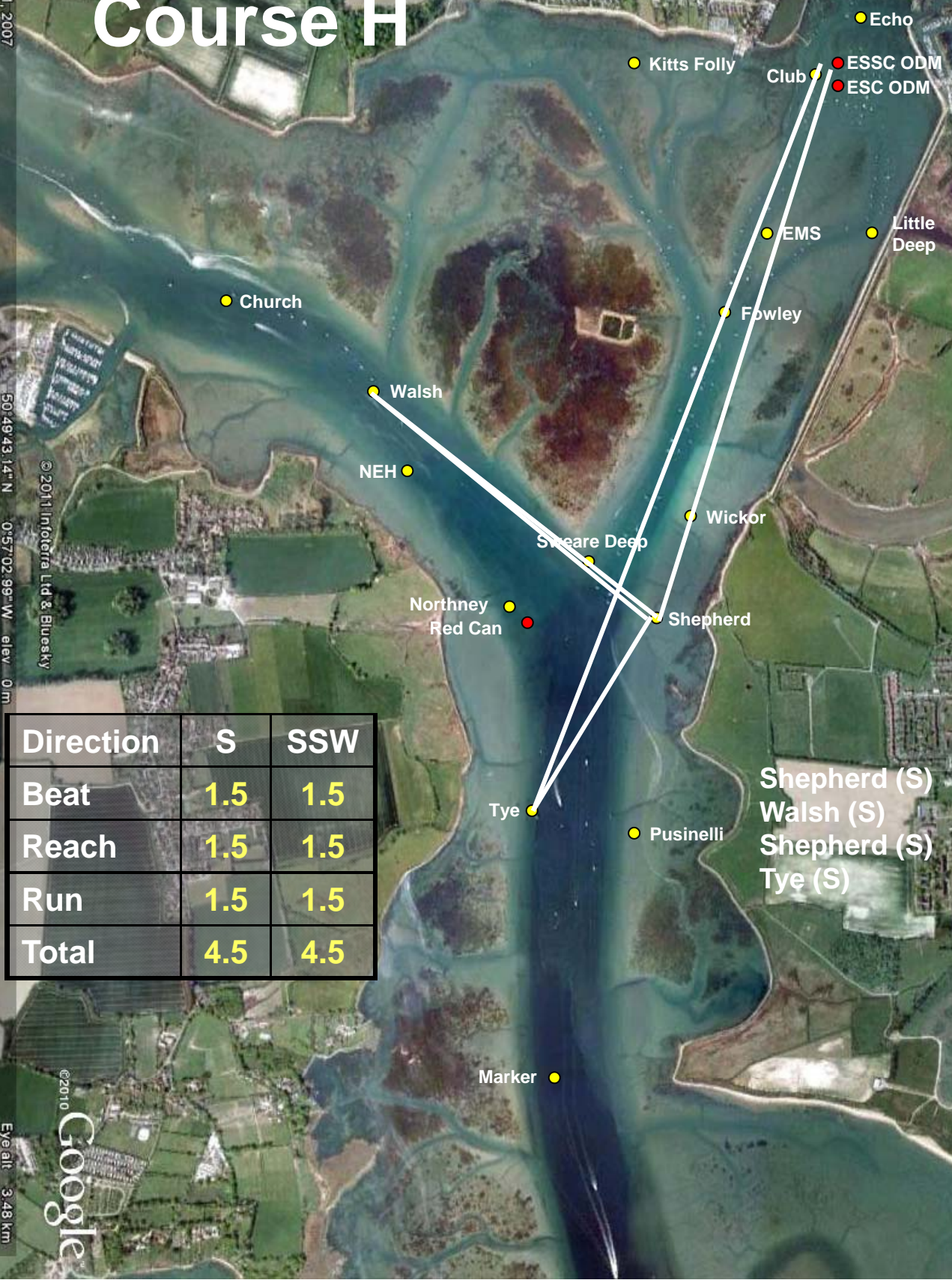
50°49'43.14" N 0°57'02.99" W elev: 0m

©2011 Infoterra Ltd & Bluesky

©2010 Google

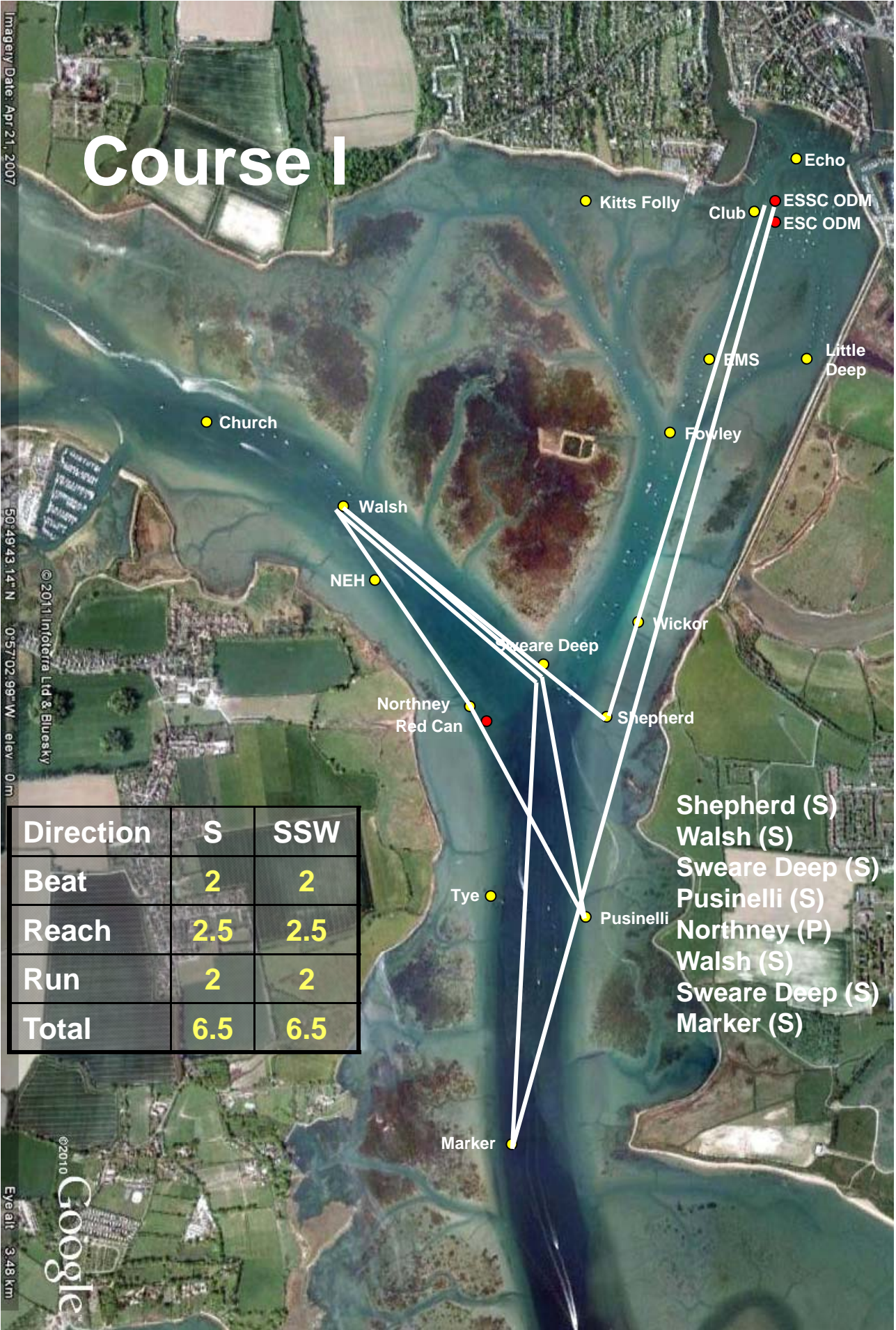
Eye alt: 3.48 km

Direction	S	SSW
Beat	1.5	1.5
Reach	1.5	1.5
Run	1.5	1.5
Total	4.5	4.5



Shepherd (S)
Walsh (S)
Shepherd (S)
Tye (S)

Course I



Direction	S	SSW
Beat	2	2
Reach	2.5	2.5
Run	2	2
Total	6.5	6.5

- Shepherd (S)
- Walsh (S)
- Swear Deep (S)
- Pusinelli (S)
- Northney (P)
- Walsh (S)
- Swear Deep (S)
- Marker (S)

Imagery Date: Apr 21, 2007
 50°49'43.14" N 0°57'02.99" W elev: 0m
 © 2011 Infoterra Ltd & Bluesky
 © 2010 Google
 Eye alt: 3.48 km

Course J

Imagery Date: Apr 21, 2007

50°49'43.14" N 0°57'02.99" W elev. 0m

© 2011 Infoterra Ltd & BlueSky

© 2010 Google

Eye alt. 3.48km

Direction	SW
Beat	2
Reach	2
Run	1.5
Total	5.5



- Little Deep (S)
- Fowley (P)
- Wickor (S)
- Swear Deep (S)
- NEH (S)
- Walsh (S)
- Shepherd (S)
- Tye (S)
- Wicker (S)
- Tye (S)

Course K

Imagey Date: Apr 21, 2007

50°49'43.14" N 0°57'02.99" W elev. 0m

© 2011 Infoterra Ltd & Bluesky

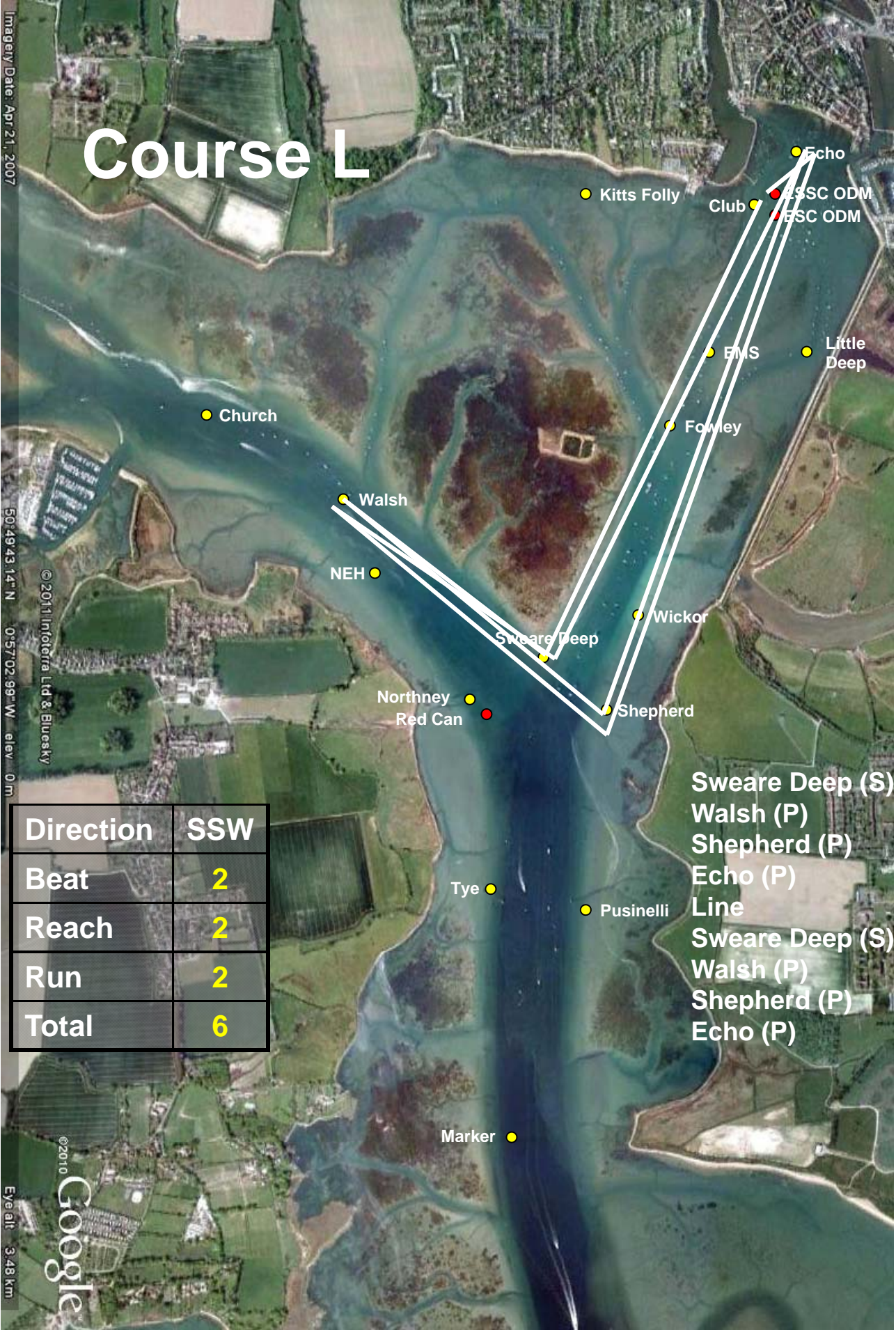
Direction	SW, SSW
Beat	1.5
Reach	1.5
Run	1.25
Total	4.5



© 2010 Google

Eye alt: 3.48 km

Course L

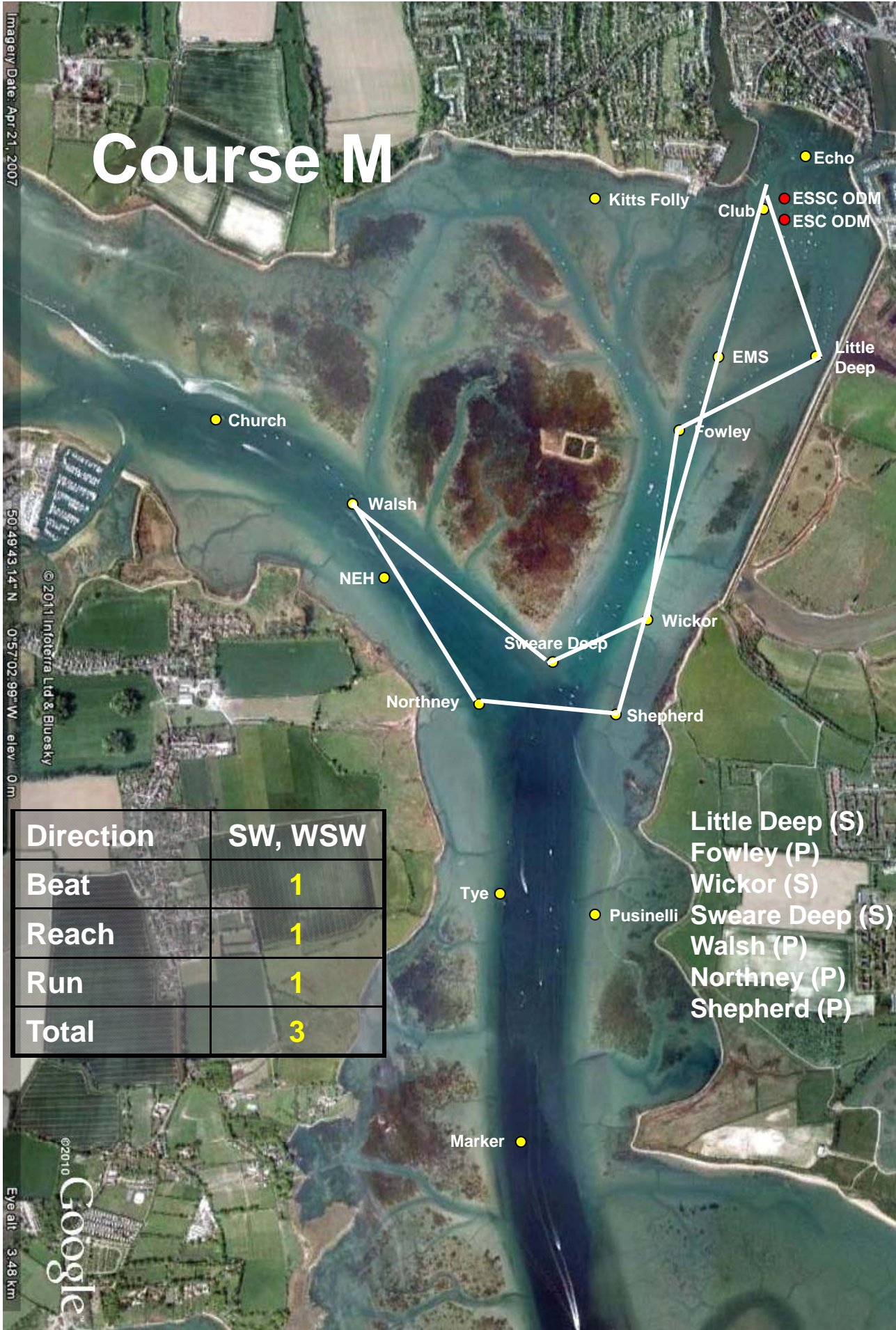


Direction	SSW
Beat	2
Reach	2
Run	2
Total	6

Swear Deep (S)
 Walsh (P)
 Shepherd (P)
 Echo (P)
 Line
 Swear Deep (S)
 Walsh (P)
 Shepherd (P)
 Echo (P)

Imagery Date: Apr 21, 2007
 50°49'43.14" N 0°57'02.99" W elev: 0m
 © 2011 Infoterra Ltd & Bluesky
 © 2010 Google
 Eye alt: 3.48 km

Course M



Direction	SW, WSW
Beat	1
Reach	1
Run	1
Total	3

- Little Deep (S)
- Fowley (P)
- Wickor (S)
- Swear Deep (S)
- Walsh (P)
- Northney (P)
- Shepherd (P)

Imagery Date: Apr 21, 2007
 50°49'43.14" N 0°57'02.99" W elev. 0m
 ©2011 Infoterra Ltd & Bluesky
 ©2010 Google
 Eye alt: 3.48 km

Course N

Imagery Date: Apr 21, 2007

50°49'43.14" N 0°57'02.99" W elev. 0m

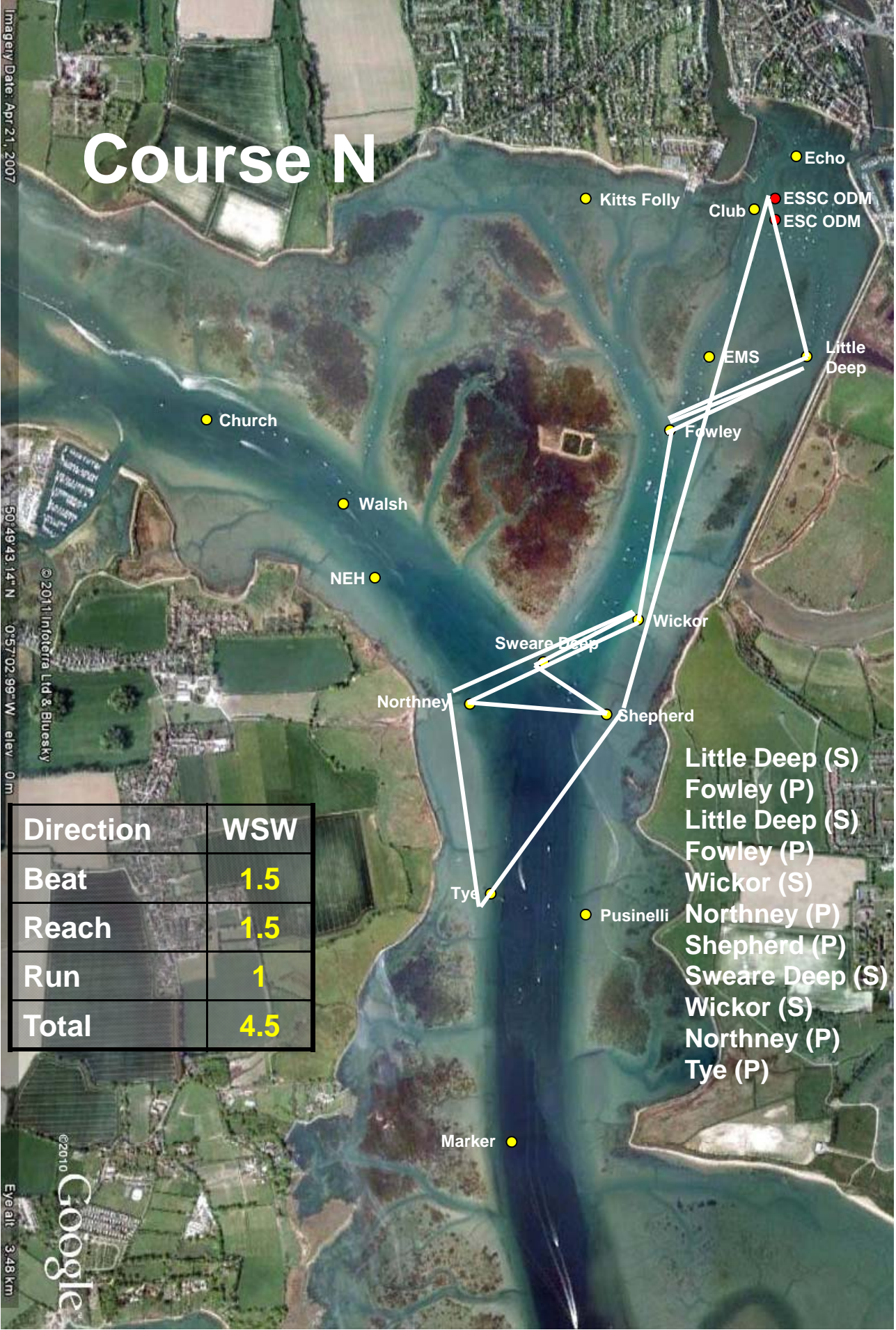
© 2011 Infoterra Ltd & BlueSky

Direction	WSW
Beat	1.5
Reach	1.5
Run	1
Total	4.5

- Little Deep (S)
- Fowley (P)
- Little Deep (S)
- Fowley (P)
- Wickor (S)
- Northney (P)
- Shepherd (P)
- Sweare Deep (S)
- Wickor (S)
- Northney (P)
- Tye (P)

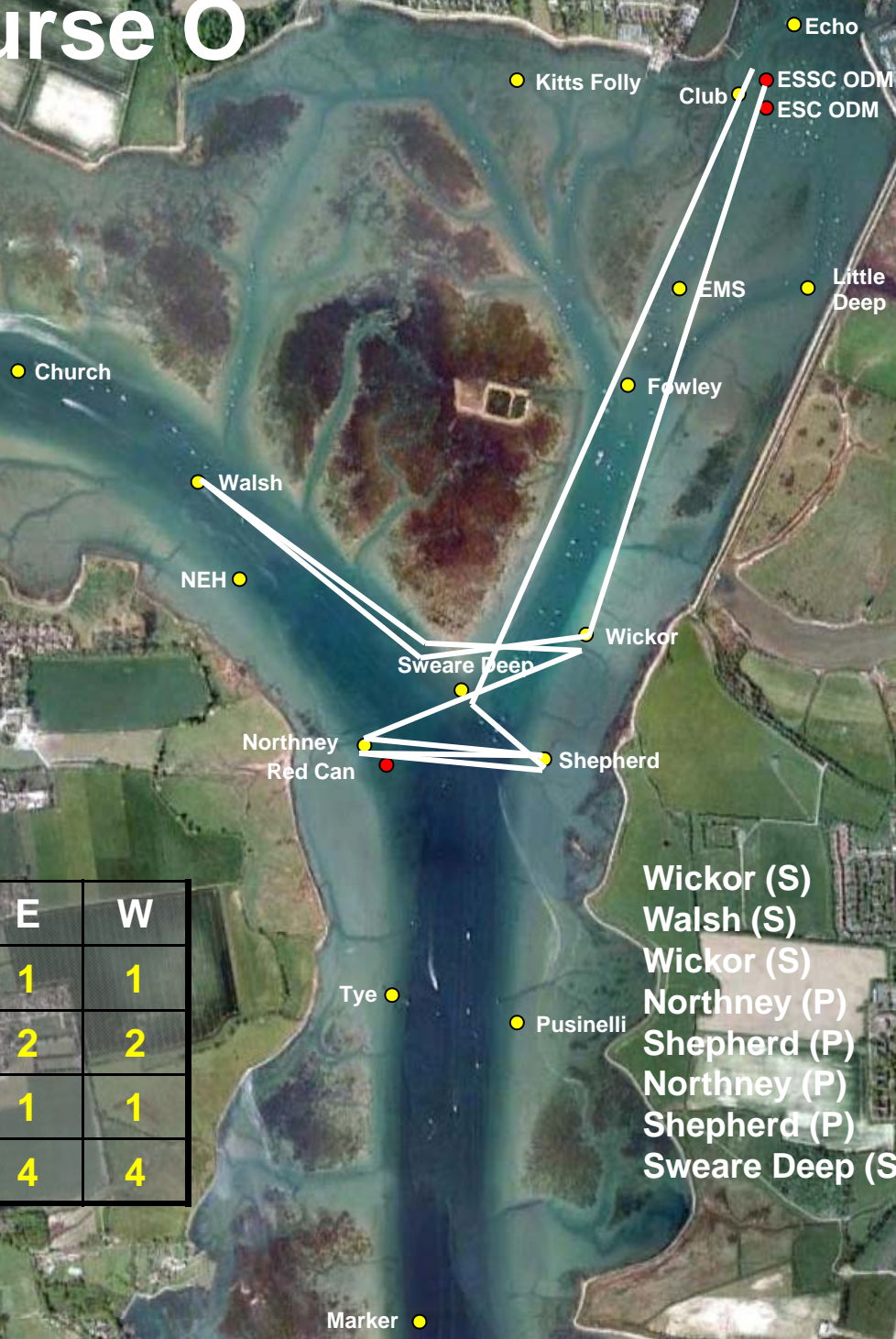
Eye alt. 3.48km

©2010 Google



Course O

Imagery Date: Apr 21, 2007
 50°49'43.14" N 0°57'02.99" W elev: 0m
 © 2011 Infoterra Ltd & Bluesky
 © 2010 Google
 Eye alt: 3.48 km

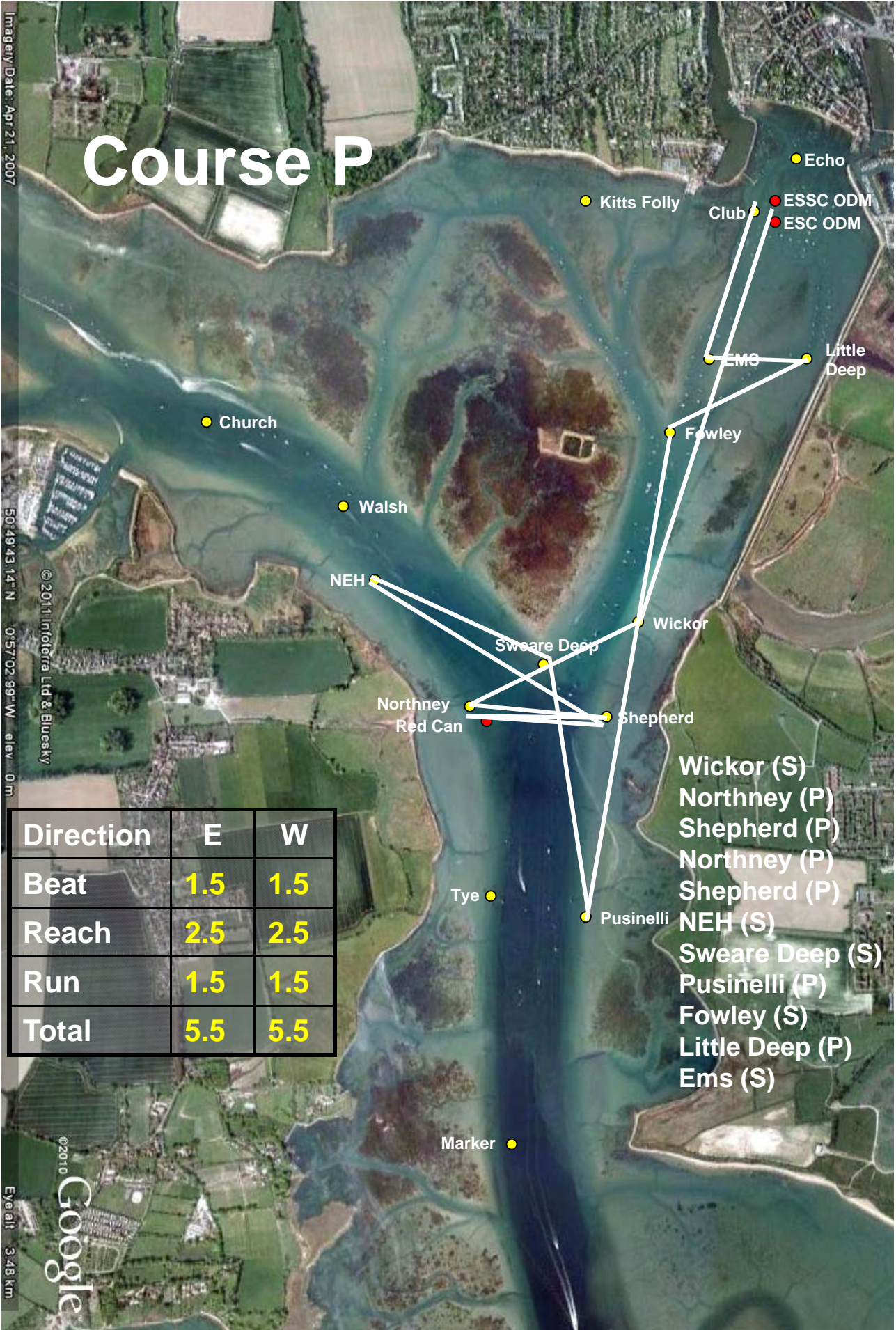


Direction	E	W
Beat	1	1
Reach	2	2
Run	1	1
Total	4	4

- Wickor (S)
- Walsh (S)
- Wickor (S)
- Northney (P)
- Shepherd (P)
- Northney (P)
- Shepherd (P)
- Swear Deep (S)

Course P

Imagery Date: Apr 21, 2007
 50°49'43.14" N 0°57'02.99" W elev: 0m
 © 2011 Infoterra Ltd & Bluesky
 © 2010 Google
 Eye alt: 3.48 km



Direction	E	W
Beat	1.5	1.5
Reach	2.5	2.5
Run	1.5	1.5
Total	5.5	5.5

- Wickor (S)
- Northney (P)
- Shepherd (P)
- Northney (P)
- Shepherd (P)
- NEH (S)
- Swear Deep (S)
- Pusinelli (P)
- Fowley (S)
- Little Deep (P)
- Ems (S)

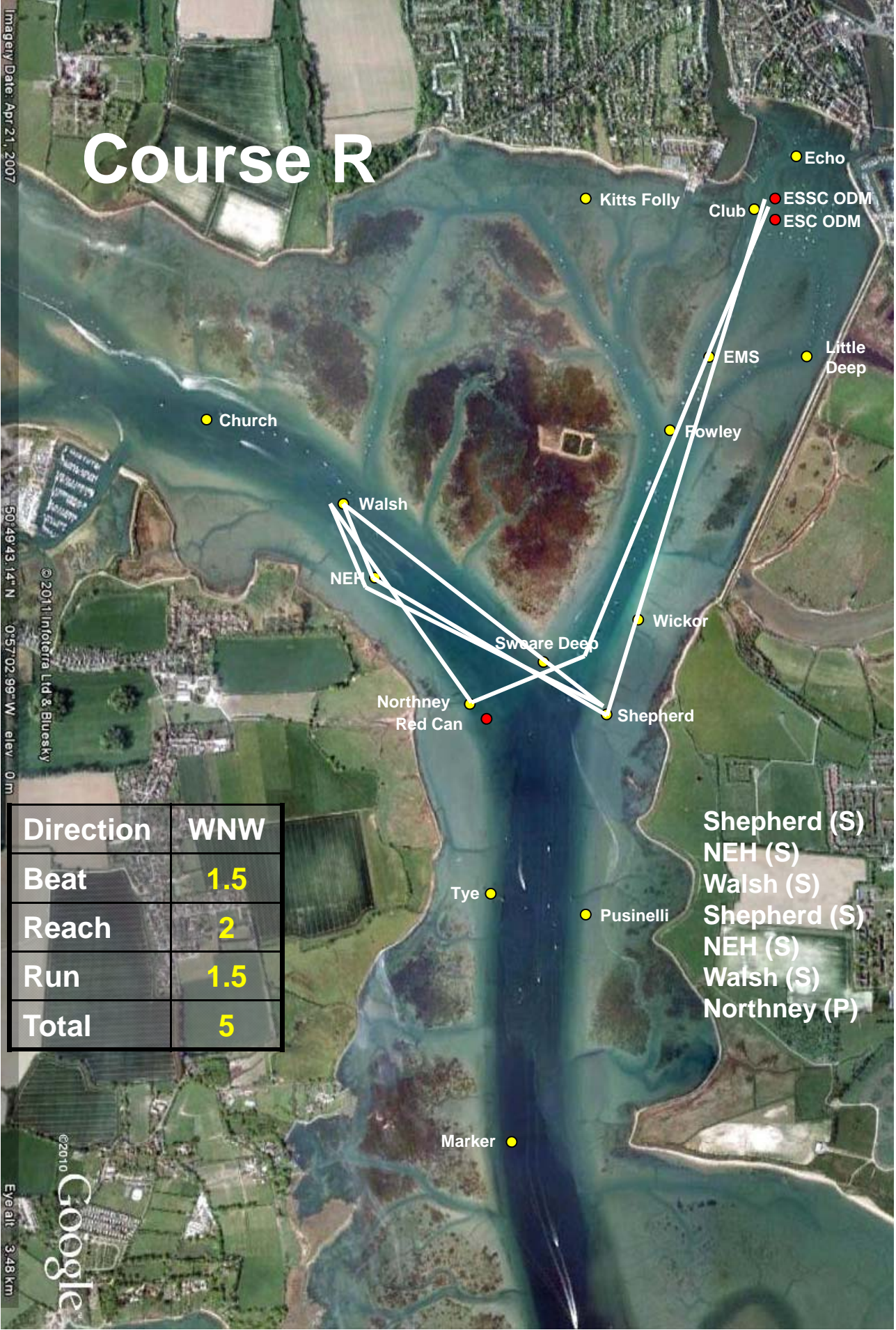
Course R

Imagery Date: Apr 21, 2007

50°49'43.14" N 0°57'02.99" W elev: 0m

© 2011 Infoterra Ltd & BlueSky

© 2010 Google
Eye alt: 3.48 km

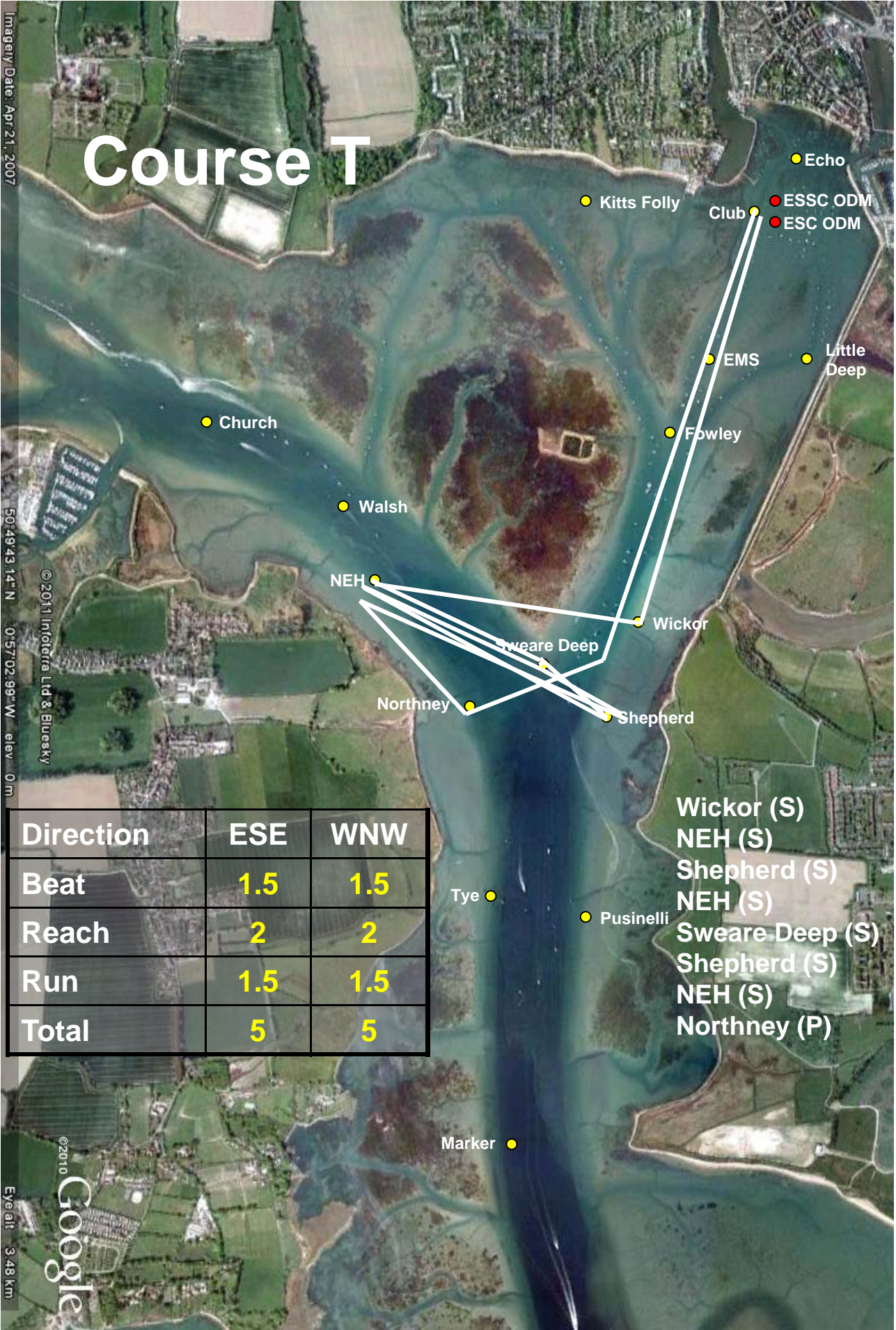


Direction	WNW
Beat	1.5
Reach	2
Run	1.5
Total	5

- Shepherd (S)
- NEH (S)
- Walsh (S)
- Shepherd (S)
- NEH (S)
- Walsh (S)
- Northney (P)

Course T

Imagery Date: Apr 21, 2007
 50°49'43.14" N 0°57'02.99" W elev. 0m
 © 2011 Infoterra Ltd & Bluesky
 © 2010 Google
 Eye alt: 3.48 km

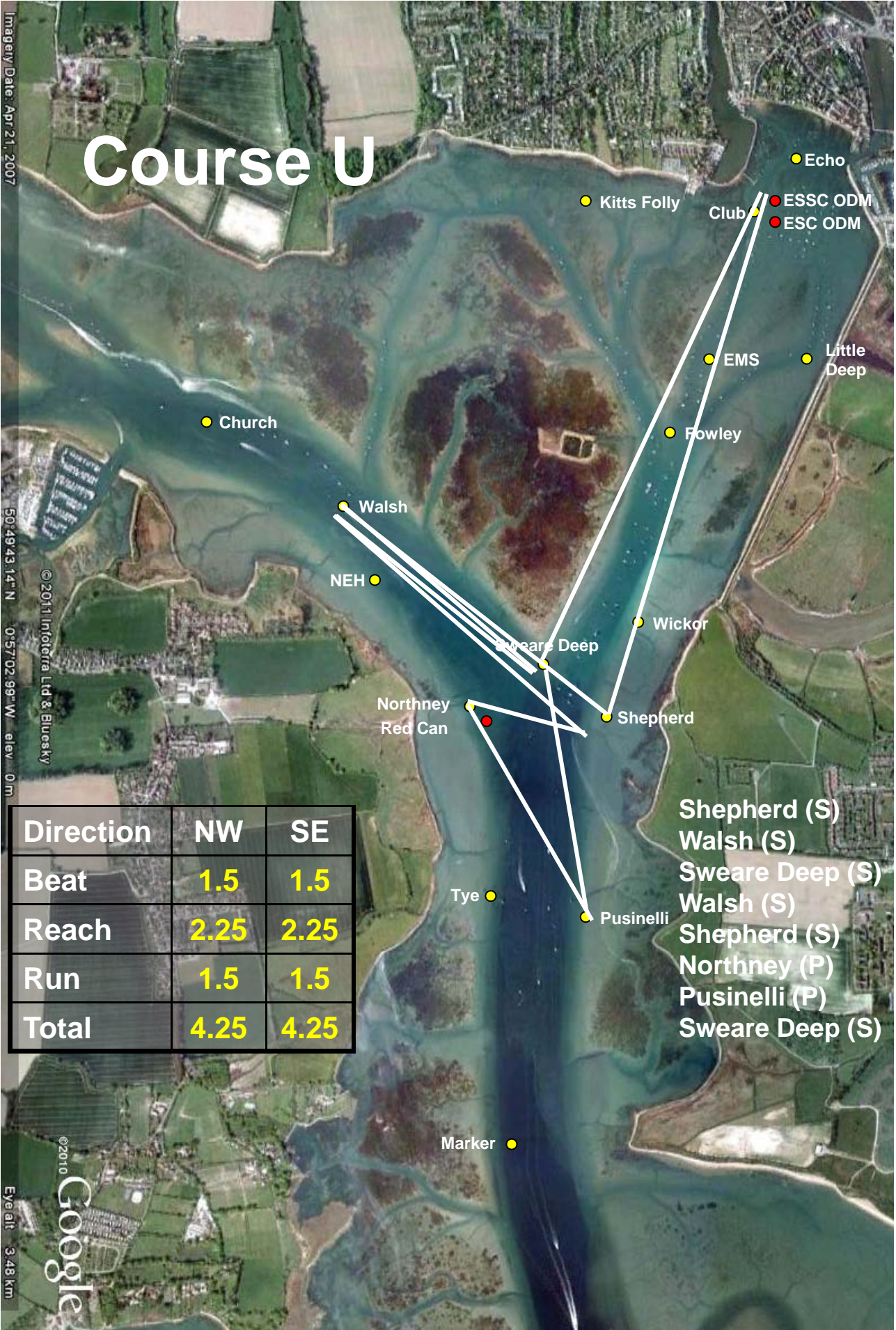


Direction	ESE	WNW
Beat	1.5	1.5
Reach	2	2
Run	1.5	1.5
Total	5	5

- Wickor (S)
- NEH (S)
- Shepheard (S)
- NEH (S)
- Swear Deep (S)
- Shepheard (S)
- NEH (S)
- Northney (P)

Course U

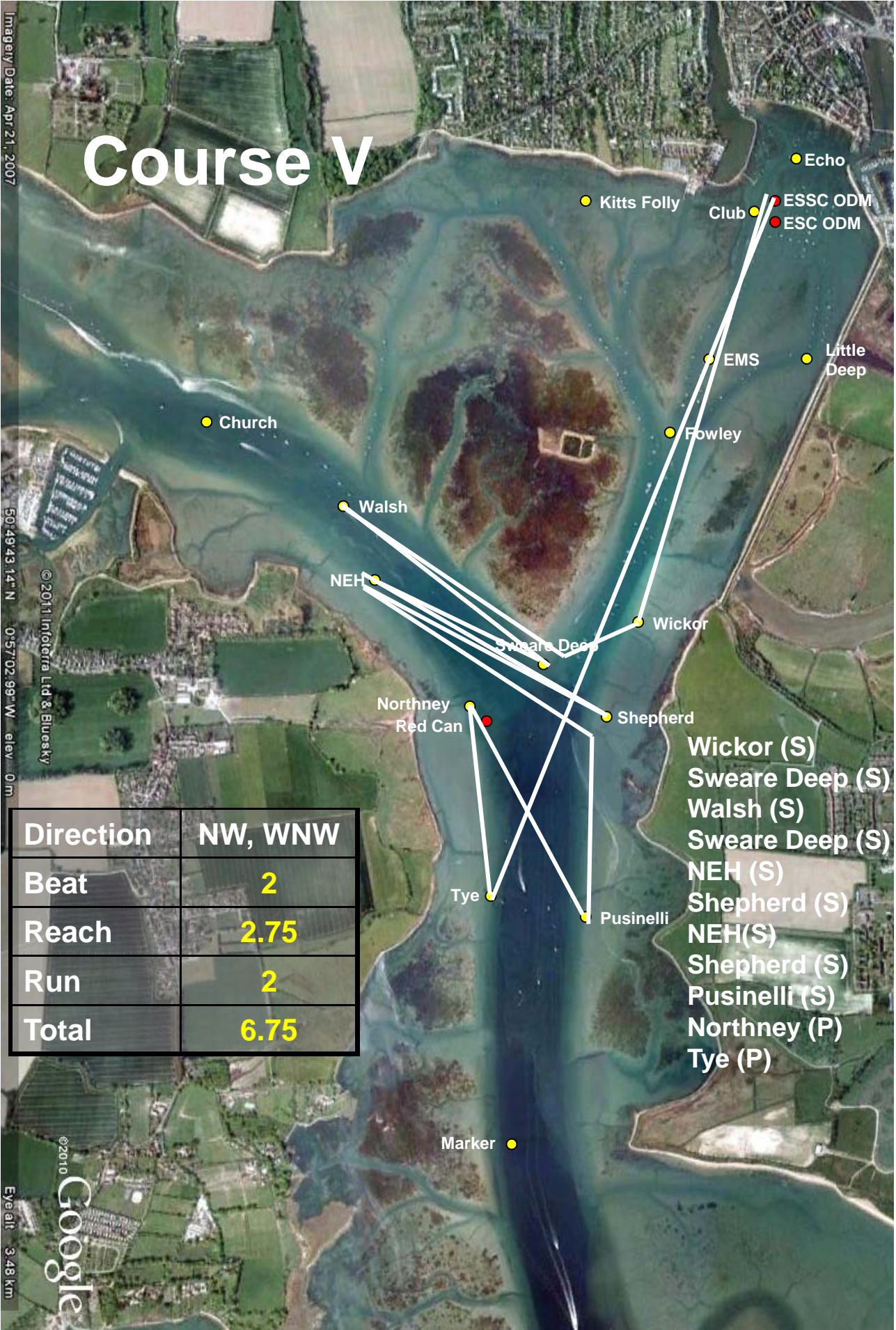
Imagery Date: Apr 21, 2007
 50°49'43.14" N 0°57'02.99" W elev. 0m
 © 2011 Infoterra Ltd & Bluesky
 © 2010 Google
 Eye alt: 3.48 km



Direction	NW	SE
Beat	1.5	1.5
Reach	2.25	2.25
Run	1.5	1.5
Total	4.25	4.25

- Shephard (S)
- Walsh (S)
- Swear Deep (S)
- Walsh (S)
- Shephard (S)
- Northney (P)
- Pusinelli (P)
- Swear Deep (S)

Course V



Direction	NW, WNW
Beat	2
Reach	2.75
Run	2
Total	6.75

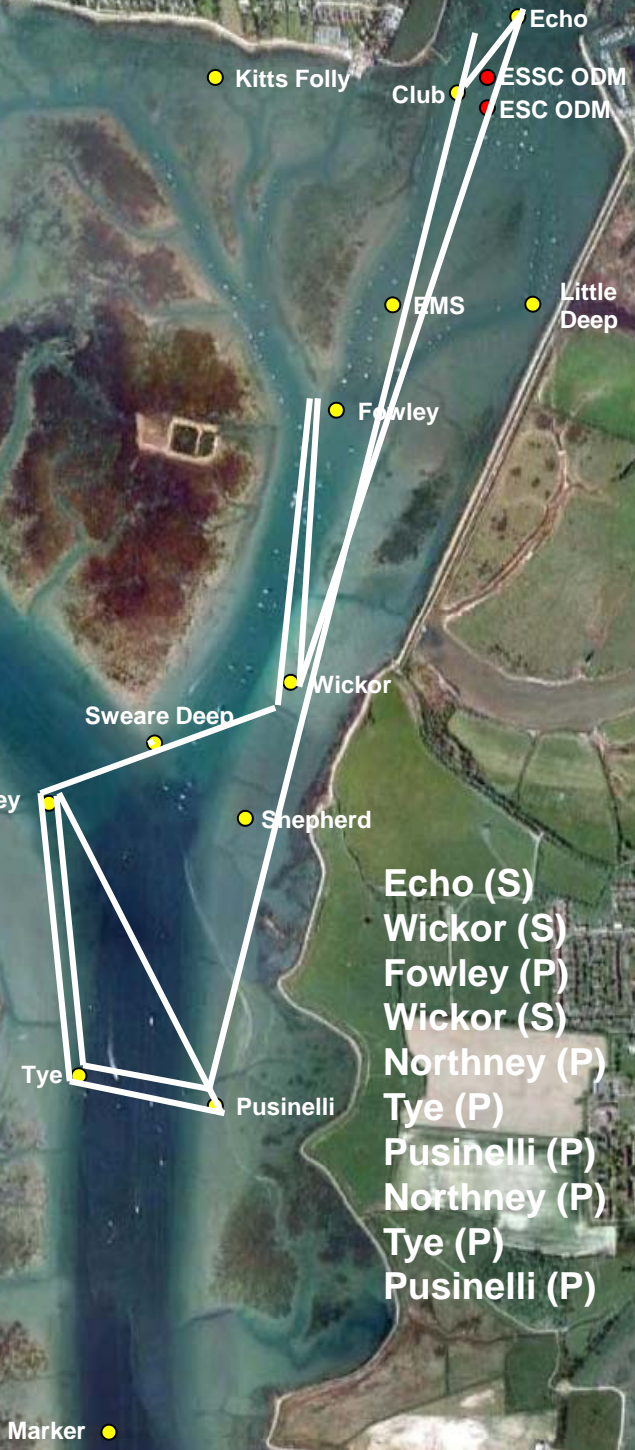
- Wickor (S)
- Sware Deep (S)
- Walsh (S)
- Sware Deep (S)
- NEH (S)
- Shepherd (S)
- NEH(S)
- Shepherd (S)
- Pusinelli (S)
- Northney (P)
- Tye (P)

Imagery Date: Apr 21, 2007
 50°49'43.14" N 0°57'02.99" W elev. 0m
 © 2011 Infoterra Ltd & Bluesky
 © 2010 Google
 Eye alt 3.48 km

Course W

Imagery Date: Apr 21, 2007
 50°49'43.14" N 0°57'02.99" W elev. 0m
 © 2010 Infoterra Ltd & Bluesky
 © 2010 Google
 Eye alt. 3.48 km

Direction	N	NNW
Beat	2	2
Reach	1.25	1.25
Run	1.75	1.75
Total	5	5



The Distribution of Courses by Wind Direction

Wind Direction	R	A	G
N		1	
NNE			111
NE			111
ENE		1	
E		11	
ESE			1
SE			1111
SSE			1
S			11
SSW			11111
SW			11111
WSW			1
W		11	
WNW			111
NW			11
NNW		1	

A Summary of Courses by Wind Direction and Distance

Direction	Distances
N	5
NNE	3, 4.2, 6
NE	3, 4.2, 6
ENE	4
E	4,5.5
ESE	5
SE	4, 4.5, 5, 6.5
SSE	4.5
S	4.5, 6.5
SSW	4.5, 6.5, 6, 6.5
SW	3, 4, 4.5, 5.5, 6.5
WSW	3,4.5
W	4, 5.5
WNW	5, 5, 6.75
NW	4.5, 6.75
NNW	5